

# AVAILABLE PROPERTIES

Lancaster Office 717.293.4477  
Harrisburg Regional Office 717.697.2422  
Chester County Office 610.380.8437



**FOR LEASE**

**GREENFIELD**

**1850 WILLIAM PENN WAY**  
Professional office space  
1,816 SF – \$23.50/SF GROSS



**FOR LEASE**

**GREENFIELD**

**1740 HEMPSTEAD ROAD**  
Modern building/Will subdivide  
34,562 SF – \$18.95/SF NNN



**FOR LEASE**

**GREENFIELD**

**1851 CHARTER LANE**  
Open floor plan/Collaborative style  
2,000 SF – \$14.95/SF NNN



**FOR LEASE**

**GREENFIELD**

**1915 OLDE HOMESTEAD LANE**  
End cap/Dock door  
5,000 SF – \$8.75/SF NNN



**FOR LEASE**

**GREENFIELD**

**1770 HEMPSTEAD ROAD**  
Modern building/Highly visible  
23,938 SF – \$23.50/SF NNN



**FOR LEASE**

**GREENFIELD**

**1861 CHARTER LANE**  
Turnkey Space/Recently Renovated  
1,000 SF – \$27.21/SF NNN



**FOR LEASE**

**GREENFIELD**

**1811 OLDE HOMESTEAD LANE**  
Mix of open space & private offices  
11,688 SF – \$14.00/SF NNN



**FOR LEASE**

**GREENFIELD**

**450 BEN FRANKLIN BOULEVARD**  
Build-to-suit/5% office build-out  
229,000 SF – \$8.95/SF NNN



**FOR LEASE**

**GREENFIELD**

**HOSPITALITY DRIVE**  
Two restaurant pad sites  
\$115,000 annually



**FOR LEASE**

**GREENFIELD**

**GREENFIELD & PITNEY**  
Build-to-suit  
9.10 Acres



**FOR LEASE**

**GREENFIELD**

**425 BEN FRANKLIN BOULEVARD**  
Build-to-suit/5% office build-out  
152,320 SF – \$8.95/SF NNN



**FOR LEASE**

**GREENFIELD**

**1858 CHARTER LANE**  
Abundance of natural light  
2,130-9,327 SF – \$12.75/SF NNN

**FOR LEASE**



**GREENFIELD**

**1838 COLONIAL VILLAGE LANE**

Manufacturing Facility  
149,808 SF – Expandable

**FOR LEASE**



**GREENFIELD**

**1827 FREEDOM ROAD**

Flex/Research & Development  
32,143 SF – \$10.25/SF NNN

**FOR LEASE**



**GREENFIELD**

**1869 CHARTER LANE**

Class A office/Flexible floorplan  
4,246 SF – \$24.00/SF Gross

**FOR LEASE**



**GREENFIELD**

**1858 CHARTER LANE**

Professional Office Space  
2,482 SF – \$11.50/SF NNN

**FOR LEASE**



**GREENFIELD**

**1846 CHARTER LANE**

Professional Office Space  
9,812 SF – \$13.25/SF NNN

**EXECUTIVE OFFICE COWORKING SPACE**

The **EXECUTIVE OFFICES**  
AT ROSSMOYNE  
Managed for you by High Associates, LLC

**AVAILABLE FOR LEASE**  
Shared office concept with  
individual private offices  
100 SF - 400 SF



**FEATURES**

- Free use of four conference rooms
- Internet and phone packages available
- Janitorial & utilities included
- Fully furnished
- Staffed receptionist
- Breakroom
- Shared copier/scanner/fax

**5000 Ritter Road, Suite 202  
Mechanicsburg, PA 17055  
(717.790.6020)**

**WWW.ROSSMOYNEBUSINESSCENTER.COM/  
EXECUTIVE-OFFICES-AT-ROSSMOYNE**



The **EXECUTIVE OFFICES**  
at Greenfield

Shared office concept with  
individual private offices

**FEATURES**

- 150 SF private offices
- Phone, reception & administrative support
- 2 conference rooms
- High-speed WiFi
- Fully furnished
- Janitorial services & utilities included
- Flexible leasing arrangements
- 24/7 access to a secured building
- Resource room with postal center, copier and fax machine
- Breakroom



**1853 William Penn Way  
Lancaster, PA 17601  
(717.293.4469)**

**WWW.GREENFIELDLANCASTER.COM/  
EXECUTIVE-OFFICES-AT-GREENFIELD**

**Lancaster Office 717.293.4477 | Harrisburg Regional Office 717.697.2422  
Chester County Office 610.380.8437**

**www.highassociates.com**

# AVAILABLE PROPERTIES

Lancaster Office 717.293.4477  
Harrisburg Regional Office 717.697.2422  
Chester County Office 610.380.8437



**FOR LEASE**



**ROSSMOYNE BUSINESS CENTER**  
**5000 RITTER ROAD**

Open floor plan/Private offices/  
Conference & Reception areas  
2,506 & 4,664 & 5,273 SF spaces - \$19.98/SF Gross

**FOR LEASE**



**ROSSMOYNE BUSINESS CENTER**  
**4940 RITTER ROAD**

Professional office  
1,180 SF - \$11.75/SF NNN

**FOR LEASE**



**ROSSMOYNE BUSINESS CENTER**  
**5010 RITTER ROAD**

Professional office  
3,101 SF - \$12.95/SF NNN

**FOR LEASE**



**ROSSMOYNE BUSINESS CENTER**  
**5020 RITTER ROAD**

Professional office with one  
overhead grade level door  
2,757 SF - \$12.75/SF NNN

**FOR LEASE**



**ROSSMOYNE BUSINESS CENTER**  
**5066 RITTER ROAD**

Dry storage  
15,246 SF - \$9.50/SF GROSS

**FOR LEASE**



**ROSSMOYNE BUSINESS CENTER**  
**5020 RICHARD LANE**

Call Center or Large Professional Office  
19,994 SF - \$19.95/SF Modified Gross

**FOR LEASE**



**ROSSMOYNE BUSINESS CENTER**  
**4909 LOUISE DRIVE**

Open space/2 private offices/1 roll-up door  
2,771 SF - \$12.95/SF NNN

**FOR LEASE**



**ROSSMOYNE BUSINESS CENTER**  
**5041 LOUISE DRIVE**

Build-to-suit  
Up to 18,000 SF on 3 Acres

**FOR LEASE**



**ROSSMOYNE BUSINESS CENTER**  
**5040 LOUISE DRIVE**

Industrial/Flex Space  
4,880 & 4,887 SF - \$9.95-\$10.25/ SF NNN

**FOR LEASE**



**ROSSMOYNE BUSINESS CENTER**  
**4910 LOUISE DRIVE**

Vanilla shell for office or retail  
1,000 SF - \$12.95/SF NNN

**COMING SOON !**  
**(MID 2024)**



**ROSSMOYNE BUSINESS CENTER**

**5073 RITTER ROAD**

Call center or Warehouse space  
64,514 SF - \$8.75-\$9.35/SF NNN

**FOR SALE**



**ANNVILLE**  
**CLEAR SPRING ROAD**  
Commercial/Divisible  
23 +/- Acres – Negotiable

**FOR SALE**



**ANNVILLE**  
**CLEAR SPRING ROAD**  
Commercial/Signalized corner  
4 Acres – \$2,000,000

**FOR SALE/LEASE**



**HUMMELSTOWN**  
**RED TOP ROAD & RT. 39**  
Neighborhood Commercial  
3 Acres – Negotiable

**FOR LEASE**



**ELYSBURG**  
**386 W VALLEY AVENUE**  
Land  
6.4 +/- acres (negotiable)

**FOR SALE/ LEASE**



**BETHEL**  
**41 DINER DRIVE**  
Commercial/Along Rt. 1-78  
44 +/- Acres

**FOR LEASE**



**HUNTINGDON**  
**10210 FAIRGROUNDS ROAD**  
Commercial/Industrial  
90,000 SF/14 Acres – \$3.50/SF NNN

**UNDER AGREEMENT**



**WIND GAP**  
**73 NORTH BROADWAY**  
Convenience Store  
2,940 SF – \$1,499,000

**FOR SALE**



**DOVER**  
**1214 BIG MOUNT ROAD**  
House of Worship  
6,068 SF – \$350,000

Lancaster Office 717.293.4477 | Harrisburg Regional Office 717.697.2422  
Chester County Office 610.380.8437

[www.highassociates.com](http://www.highassociates.com)



**FOR LEASE**

**HIGHLANDS CORPORATE CENTER**  
**495 HIGHLANDS BLVD.**  
Small medical office  
1,044 SF – \$14.50/SF NNN



**FOR LEASE**

**HIGHLANDS CORPORATE CENTER**  
**495 HIGHLANDS BLVD.**  
Mix of open space & private offices  
1,007-2,801 SF – \$14.50/SF NNN



**FOR LEASE**

**HIGHLANDS CORPORATE CENTER**  
**525 HIGHLANDS BLVD.**  
Professional office space  
2,287-10,258 SF – \$14.75/SF NNN



**FOR SALE**

**LANCASTER**  
**39-47 N DUKE STREET**  
Three parcel assemblage  
33,000 SF – \$2,950,000



**FOR SALE**

**LANCASTER**  
**822 MARIETTA AVENUE**  
Medical Office Condo  
1,035 SF – \$85,000



**FOR LEASE**

**LANCASTER**  
**794-798 NEW HOLLAND AVENUE**  
Commercial building  
8,560-11,200 SF – \$10.00-\$12.00/SF NNN



**FOR LEASE**

**LANCASTER**  
**480 NEW HOLLAND AVENUE**  
Class A office  
2,800 SF – \$13.75/SF NNN



**FOR LEASE**

**LANCASTER**  
**350 NEW HOLLAND AVENUE**  
Attractive/Modern suite  
2,878 SF – \$14.95/SF Gross



**FOR LEASE**

**LANCASTER**  
**805 ESTELLE DRIVE**  
Professional office space  
4,333 SF – \$13.95/SF NNN



**FOR LEASE**

**LANCASTER**  
**160 NORTH POINTE BLVD.**  
Professional office space  
1,798 SF – \$26.50/SF GROSS



**FOR LEASE**

**LANCASTER**  
**619 S PRINCE STREET**  
Professional office space  
7,841 SF – \$5.95/SF NNN



**FOR LEASE**

**DOWNTOWN LANCASTER**  
**36 EAST KING STREET**  
Professional office  
3,338 SF – \$16.75/SF Gross



**FOR LEASE**

**LANCASTER**  
**903 NISSLEY ROAD**  
Office/Retail space  
3,696 SF – \$14.95/SF NNN



**UNDER CONTRACT**

**MILLERSVILLE**  
**249 MANOR AVENUE**  
Retail center  
14,650 SF – \$1,550,000

Lancaster Office 717.293.4477 | Harrisburg Regional Office 717.697.2422  
Chester County Office 610.380.8437

[www.highassociates.com](http://www.highassociates.com)



**FOR LEASE**

**MILLERSVILLE**  
**501 LEAMAN AVENUE**  
Office/Retail space  
4,000 SF – \$14.95/SF NNN



**FOR LEASE**

**MILLERSVILLE**  
**16A MANOR AVENUE**  
Medical Office  
3,720 SF – \$4,000/month



**FOR LEASE**

**MANHEIM**  
**15 MARKET SQUARE**  
Professional office space  
360-1000 SF – \$900-\$1,100/month



**FOR SALE**

**MT. JOY**  
**7 MARIETTA AVENUE**  
House of Worship  
9,454 SF – \$749,000



**FOR SALE**

**EPHRATA**  
**1398 & 1404 W MAIN STREET**  
Turn-key restaurant  
10,896 SF – \$2,400,000



**FOR LEASE**

**EPHRATA**  
**501 ALEXANDER DRIVE**  
To-be-built/New addition  
45,000 SF – \$7.25/SF NNN



**FOR LEASE**

**DENVER**  
**935 STONE HILL ROAD**  
Professional office space  
4,000 SF – \$7.95/SF NNN



**FOR SALE**

**DENVER (BOWMANVILLE)**  
**1286 READING ROAD**  
Ground Lease  
2,500 SF Bldg - \$25,000/year  
10,000 SF Bldg - \$40,000/year



**FOR LEASE**

**MILL CREEK SQUARE**  
**2350 LINCOLN HIGHWAY**  
Small shops/End caps  
1,505-3,357 SF



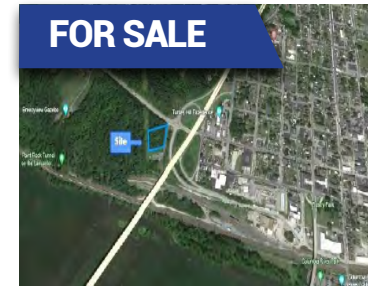
**FOR SALE**

**LANDISVILLE**  
**190 STONY BATTERY ROAD**  
Free standing building  
2,496 SF – \$550,000



**FOR LEASE**

**LITITZ**  
**28 E 28TH DIVISION HIGHWAY**  
Warehouse space  
10,675 SF – \$8.67/SF NNN



**FOR SALE**

**COLUMBIA**  
**750 N 3RD STREET**  
Land/Development Opportunity  
0.83 Acres – \$339,999



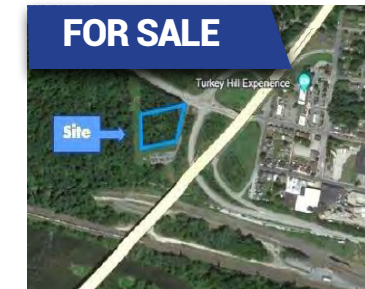
**FOR SALE**

**COLUMBIA**  
**4324 MARIETTA AVENUE**  
Brand new building  
8,000 SF – 6 Acres – \$2,299,000



**FOR LEASE**

**COLUMBIA**  
**445 LINDEN STREET**  
Free standing building/Highly visible  
1,500 SF – Price negotiable



**FOR SALE**

**COLUMBIA**  
**750 N 3RD STREET**  
Land zoned Light Industrial  
0.83 Acres – \$339,999



**FOR LEASE**

**LANCASTER**  
**31 S LIME STREET**  
Professional Office Space  
5,044 SF – \$16.00/SF NNN

Lancaster Office 717.293.4477 | Harrisburg Regional Office 717.697.2422  
Chester County Office 610.380.8437

[www.highassociates.com](http://www.highassociates.com)

# COMMERCIAL REAL ESTATE TEAM

Your Full Service Real Estate Firm



**William Boben, CCIM, SIOR**  
Senior Vice President of Sales & Leasing



**Annette Cassel Means**  
Associate Broker



**Jeff Kurtz, CCIM, SIOR**  
Associate Broker



**Michael Bowser, CCIM**  
Investment Real Estate Advisor



**Bree Robinson**  
Brokerage Advisor



**Aaron Skelly**  
Brokerage Advisor



**Erin Downey, CCIM**  
Brokerage Advisor



**Derry Young**  
Realtor/Commercial Asset Manager



**Tara Hipps**  
Administrative Coordinator IV



**Caitlin Shrift**  
Administrative Coordinator IV

**William Boben, III, CCIM, SIOR**  
bboben@high.net | 717.209.4012

**Annette Cassel Means**  
ameans@high.net | 717.791.2064

**Jeffrey Kurtz, CCIM**  
jkurtz@high.net | 717.293.4554

**Michael Bowser, CCIM**  
mbowser@high.net | 717.293.4553

**Bree Robinson**  
brobinson@high.net | 717.209.4089

**Aaron Skelly**  
askelly@high.net | 717.209.4033

**Erin Downey, CCIM**  
edowney@high.net | 717.791-2071

**Derry Young**  
dyoung@high.net | 717.791.2060

**Tara Hipps**  
thipps@high.net | 717.293.4431

**Caitlin Shrift**  
cshrift@high.net | 717.697-2422

Lancaster Office 717.293.4477 | Harrisburg Regional Office 717.697.2422  
Chester County Office 610.380.8437

[www.highassociates.com](http://www.highassociates.com)

