

For Lease

717.293.4477



684 WEST MAIN STREET
NEW HOLLAND, PA 17557

Jeff Kurtz, CCIM
717.293.4554 – direct line
jkurtz@high.net

Ruth M. Devenney, CCIM, SIOR
717.293.4552 – direct line
rdevenney@high.net



Office/Showroom



*684 West Main Street
New Holland, PA 17557*

Total Square Feet:

4,000 SF (Unit B)
1,950 SF (Unit C)
1,400 SF (Unit 2)

Lease Rate:

\$8.95/SF NNN
\$8.95/SF NNN
\$8.95/SF NNN

Description:

4,000 SF (Unit B) - Features four private offices, large open rooms, kitchen and two restrooms.

1,950 SF (Unit C) - Features five private offices for exam rooms, reception area and breakroom.

1,400 SF (Unit 2) - Open floor plan that can be used as cubicle space for collaboration. Great for large sales team office or similar.

Jeff Kurtz, CCIIM Ruth M. Devenney, CCIM, SIOR
717.293.4554 717.293.4552
jkurtz@high.net rdevenney@high.net

Property Information

Total Square Feet Available	4,000 SF (Unit B), 1,950 SF (Unit C), 1,400 SF (Unit 2)
Number of Floors	One (1)
Ceiling Height	9 feet
Heating/Cooling	Heat pumps
Lighting	Fluorescent
Water	Well
Sewer	Public
Gas	None
Parking	Ample

Tax Account #	190-76040-0-0000
Deed Reference	5936367
Zoning	Commercial Zoning
Signage	Tenant provides signage
Municipality	Earl Township
County	Lancaster County
Road Frontage	Rt. 23
Acres	4.82 acres

Unit B

Square Feet Available	4,000 square feet
Lease Rate	\$8.95/SF NNN
Monthly Rent	\$2,983
Annual Rent	\$35,800

Unit C

Square Feet Available	1,950 square feet
Lease Rate	\$8.95/SF NNN
Monthly Rent	\$1,454
Annual Rent	\$17,452.50

Unit 2

Square Feet Available	1,400 SF
Lease Rate	\$8.95/SF NNN
Monthly Rent	\$1,044
Annual Rent	\$12,530

Information furnished regarding property for sale or rent is from sources deemed reliable but is not guaranteed. No warranty or representation is made as to accuracy thereof and is submitted subject to errors, omissions, change of price, or other conditions, prior sale or lease or withdrawal without notice. No liability of any kind is to be imposed on the broker herein.

2021 CAM fees for
684 W Main St. New Holland Pa.

Taxes – \$11,475.60

Insurance – \$2,233.09

Snow – \$610.63

Mow - \$1,080.75

Property Management (@5%) - \$827.76

Maintenance/Repairs (@5%) - \$827.76

Water Equipment Maintenance- \$245.50

Sewer - \$360.00

Trash - \$549.56

TOTAL - \$18,210.65

Total Building(s) Size 15,275 SF

CAM Fee - \$1.19 Per SF

Tenant pays electric directly to that supplier.

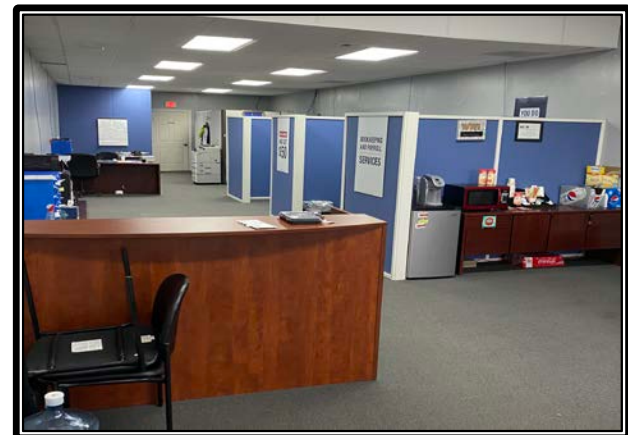
Property Photos
4,000 SF

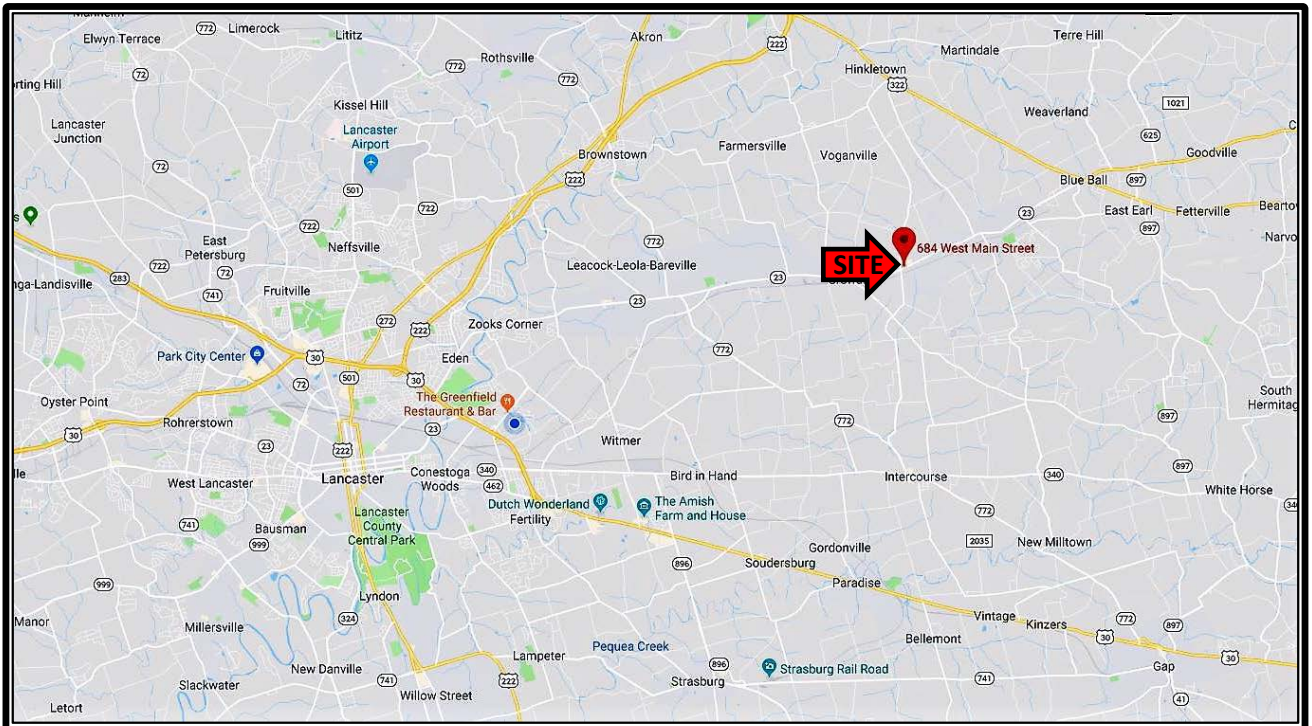
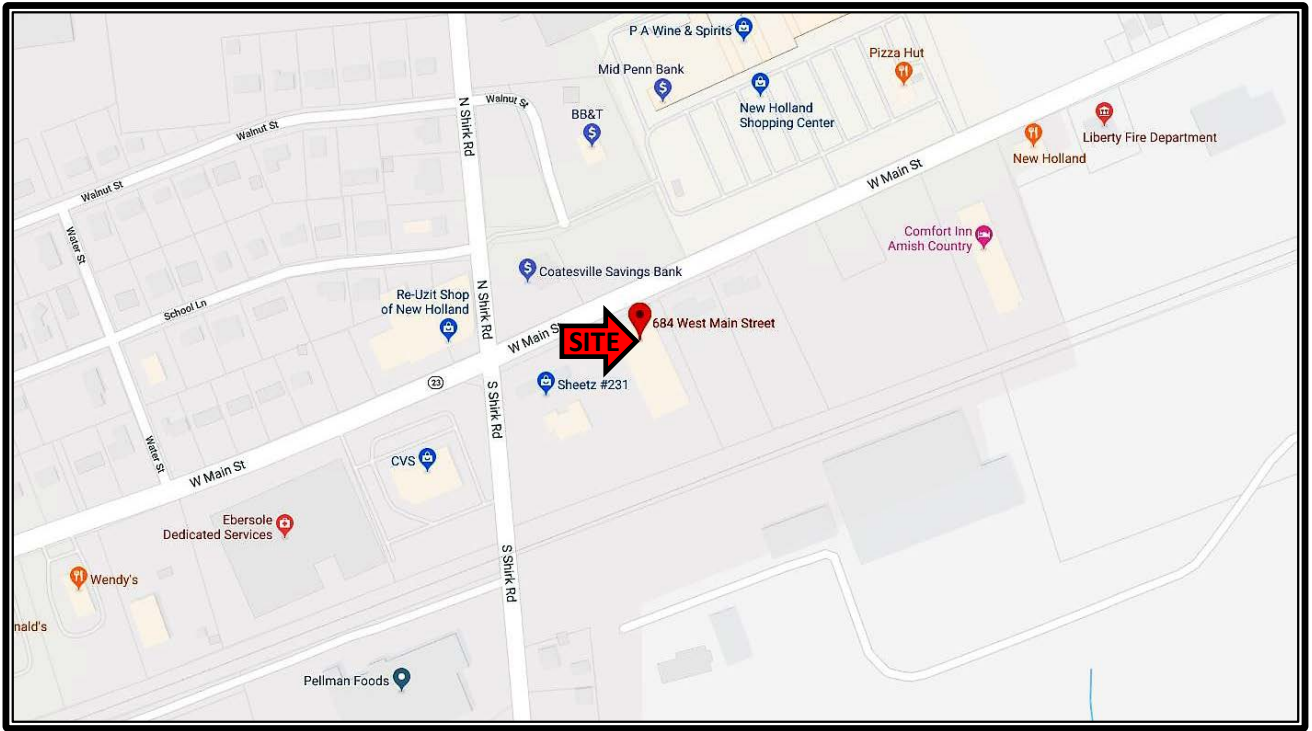
684 West Main Street
New Holland, PA 17557

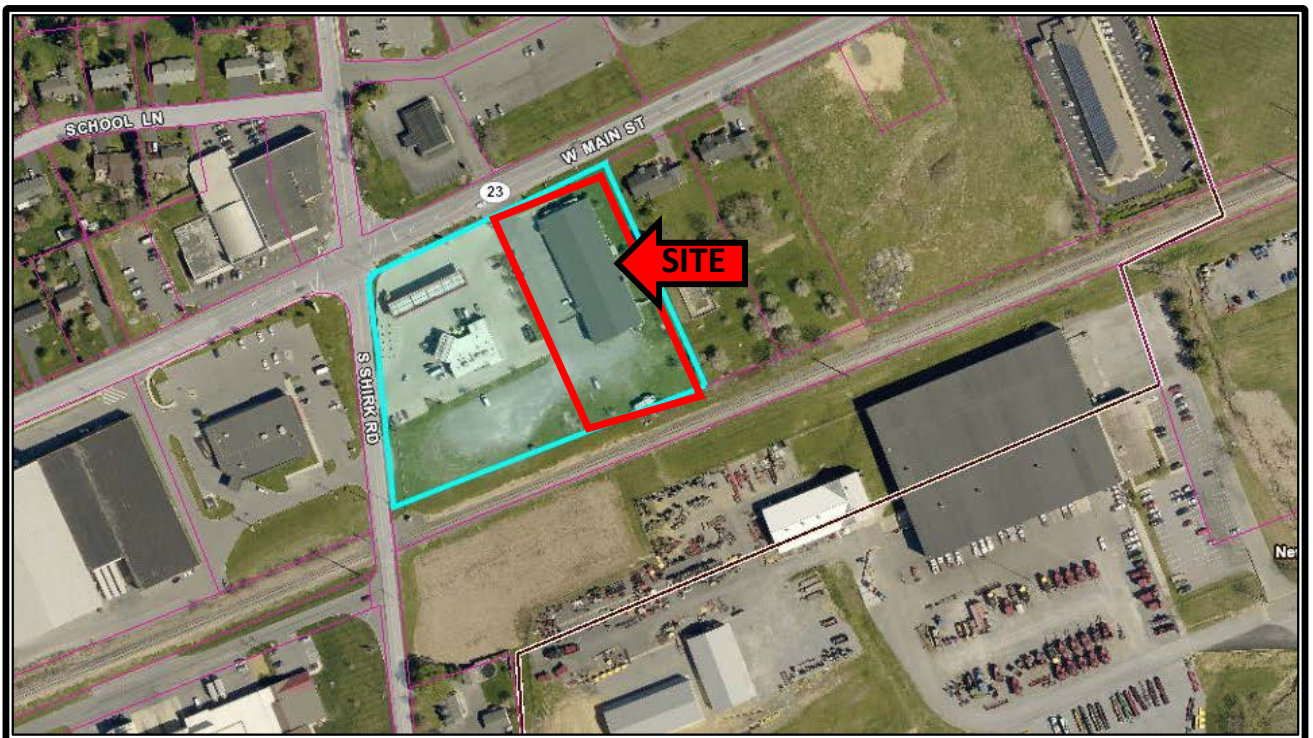


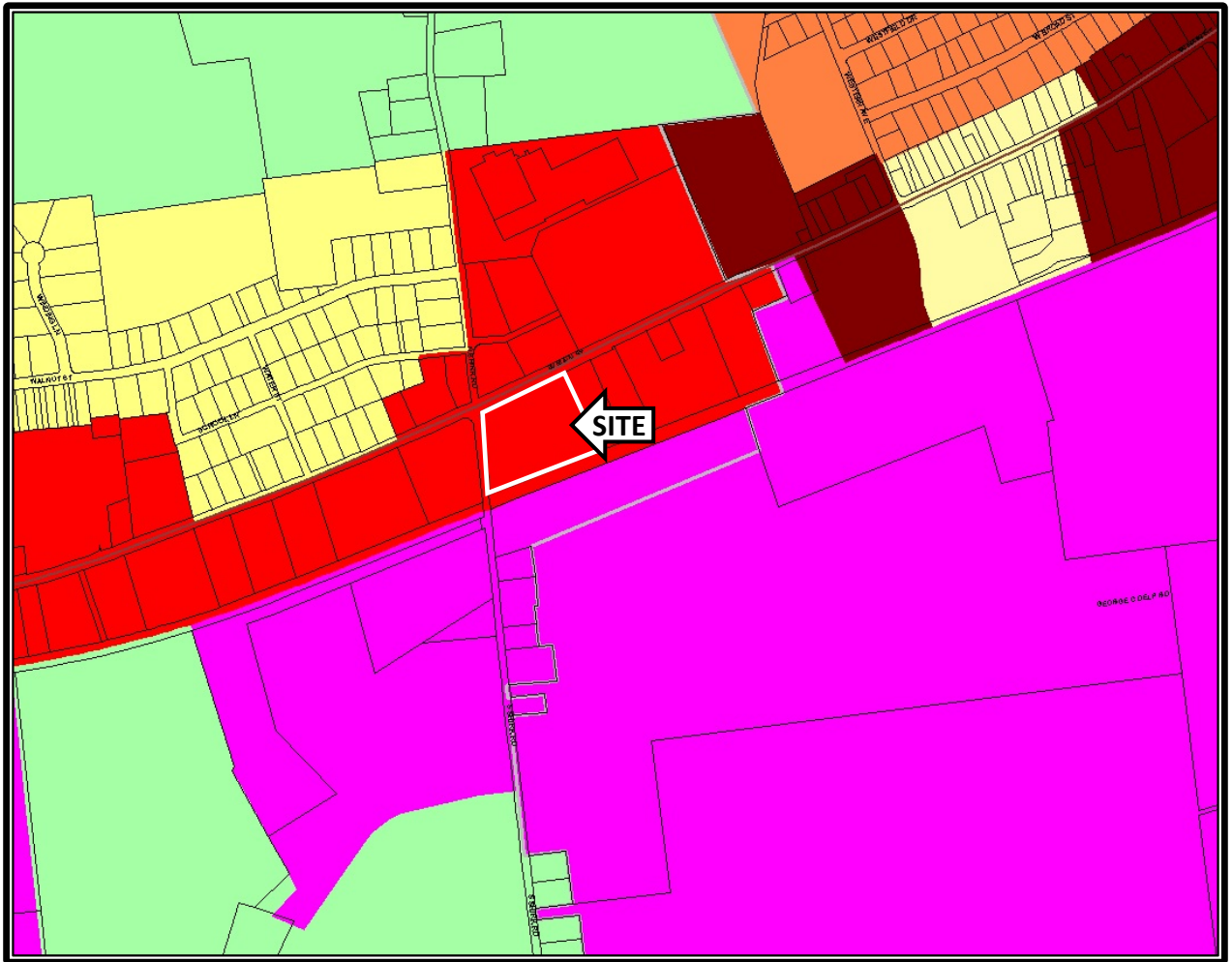
Property Photos
1,400 SF

684 West Main Street
New Holland, PA 17557

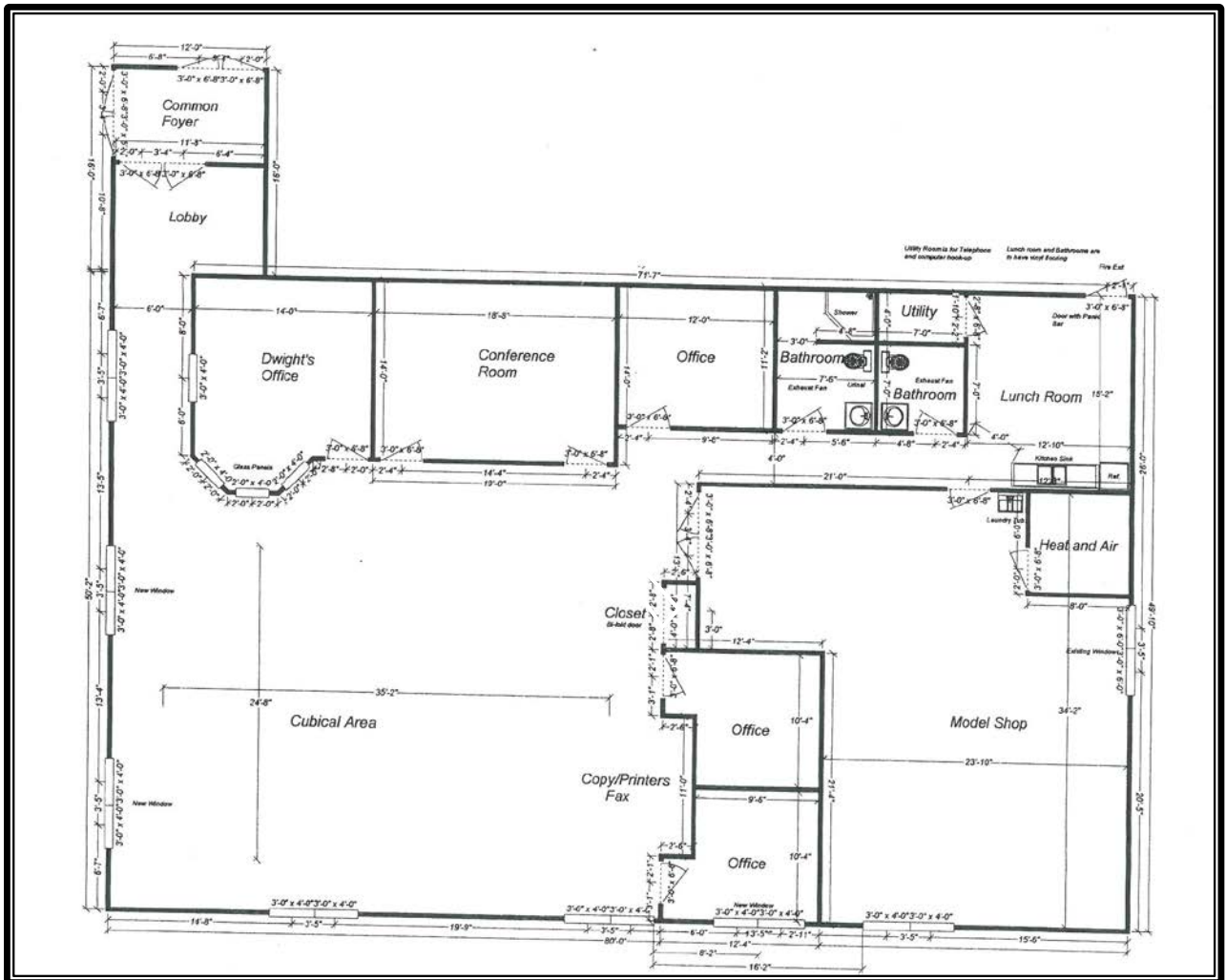


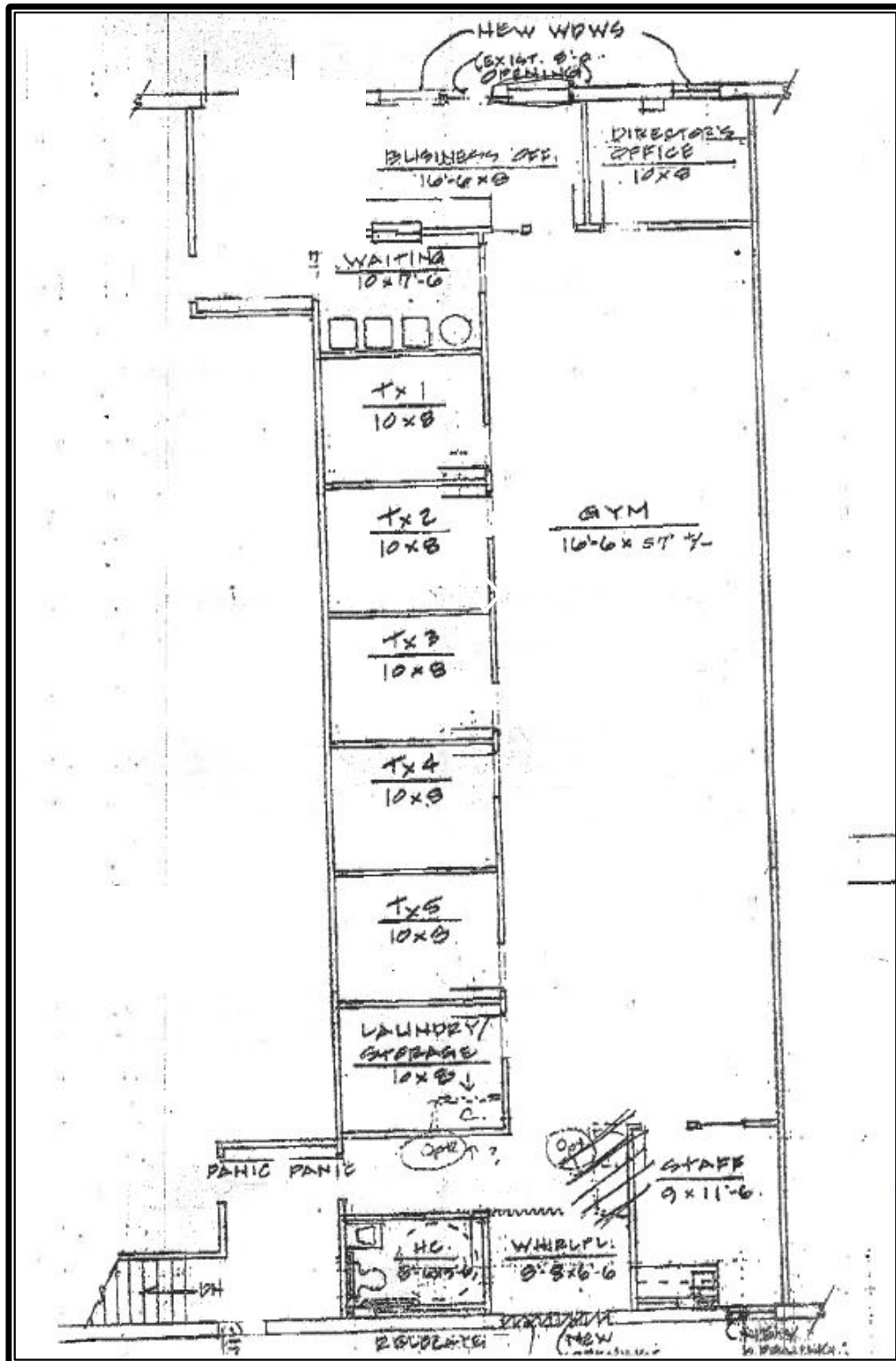






Commercial Zoning







An Affiliate of High Real Estate Group LLC
Industrial/Commercial Realtors

1853 William Penn Way
Lancaster, PA 17601

717.291.2284
FAX 717.293.4488
1.800.638.4414

5000 Ritter Road
Suite 201
Mechanicsburg, PA 17055
717.697.2422
FAX 717.697.0870
1.800.213.0094

525 Highlands Boulevard
Suite 107
Coatesville, PA 19320
610.380.8437
FAX 610.380.0583

11020 David Taylor Drive
Suite 130
Charlotte, NC 28262
704.688.0800
FAX 704.688.0801

6497 Parkland Drive
Suite E
Sarasota, FL 34243
941.756.5599
FAX 941.758.7614

Information furnished regarding property for sale or rent is from sources deemed reliable, but is not guaranteed. No warranty or representation is made as to accuracy thereof and is submitted subject to errors, omissions, change of price, or other conditions, prior sale or lease or withdrawal without notice. No liability of any kind is to be imposed on the broker herein.